

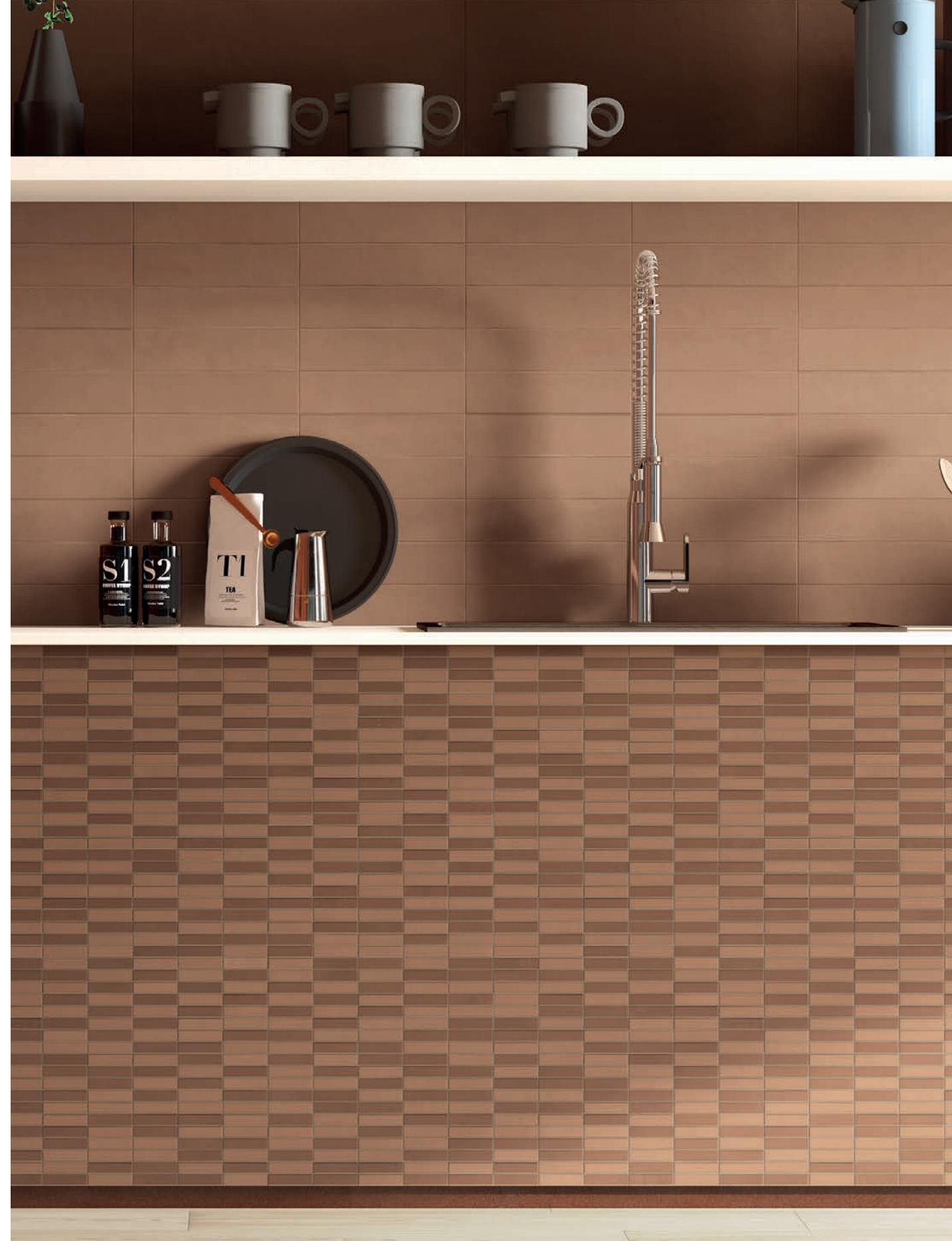
CHROMA

 GENROSE





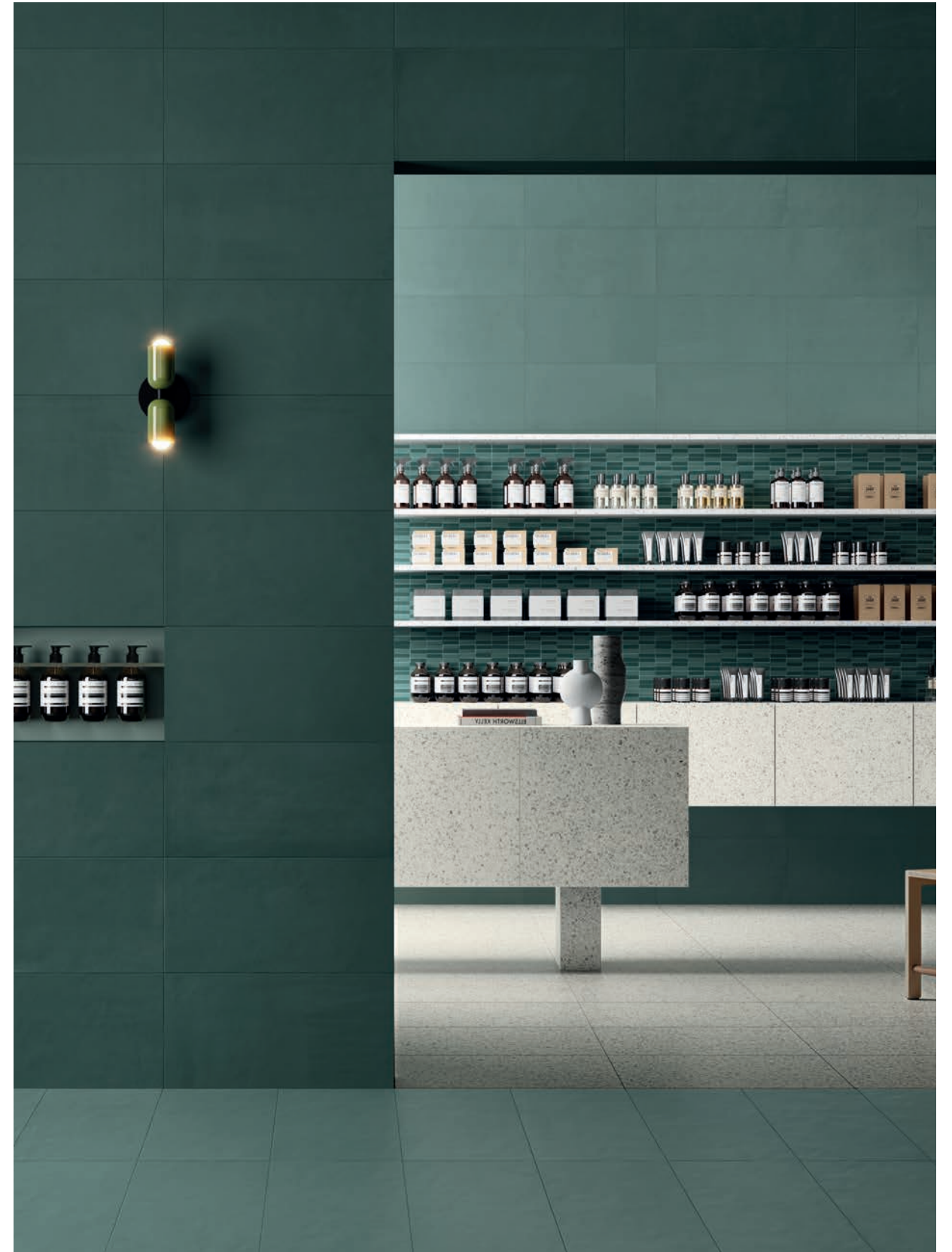
3"x12" Field Tile in Ocean Blue and River Blue



1"x3" Mosaic in Pale Red and Lava Red
3"x12" Field Tile in Pale Red



12"x24" Field Tile in River Blue



1"x3" Mosaic in Forest Green and Jade Green
12"x24" Field Tile in Forest Green and Jade Green



1"x3" Mosaic in Ocean Blue and River Blue
12"x24" Field Tile in Ocean Blue and River Blue



3"x12" Field Tile in Lava Red
12"x24" Field Tile in Lava Red

AVAILABLE IN:

9mm Field Tiles			
SIZE	FINISH	COLORS	
3"x12"	Matte	Star White Lava Red Pale Red Ocean Blue	
12"x24"		River Blue Forest Green Jade Green Star Black	
9mm Mosaics			
SHEET SIZE	TYPE	FINISH	COLORS
12"x12"	1"x3" Mosaic	Matte	Pale Red Lava Red Ocean Blue River Blue Forest Green Jade Green
9mm Trim Pieces			
SIZE	TYPE	FINISH	COLORS
6"X12"	Cove Base	Matte	Star White Star Black
3"x24"	Bullnose		



Star White



Lava Red



Pale Red

MADE TO ORDER FIELD TILES AND MOSAICS:

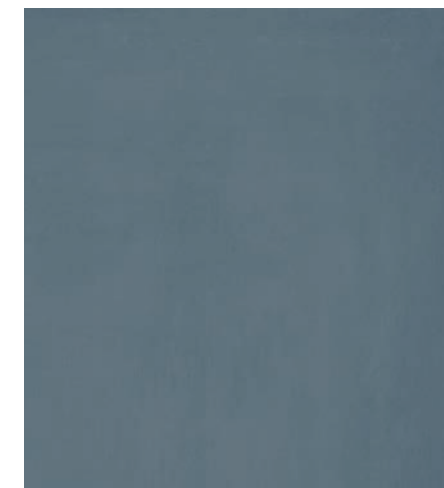
Minimum quantity required. Contact your sales representative for more information.

This represents a small portion of the mosaic patterns we offer.

We can cut any field tile to create a custom mosaic or field tile size as specified.



Ocean Blue



River Blue



Forest Green

FIELD TILES		CUBES		BASKETWEAVE	
	Any 24" field tile can be cut down to a smaller size in any length and width combination with a 1" minimum.		2" 4"		1 ³ / ₈ "x3" 2"x4"
			1"x2" 1"x3" 1 ³ / ₈ "x3" 2"x4"		2"
FIELD SHAPES*		CHEVRONS		HERRINGBONE	
	Half Hexagon 6.7" Base		2"x12"		1"x2" 2"x4" 5/8"x4"
	Diamond 4"	OCTAGONS		HEXAGONS	
	Hexagon 6"		2" w/ 0.6" Squares		1 ¹ / ₈ " 2"
	Chevron 2"x12" 6"x24"	SQUARES		RECTANGLES	
	TRAPEZOID W/ DOT 4"x2 ¹ / ₂ " w/ 5/8" Dot		1"x1" 1 ³ / ₈ "x1 ³ / ₈ " 2"x2" 3"x3"		1"x2" 1"x4"



Jade Green



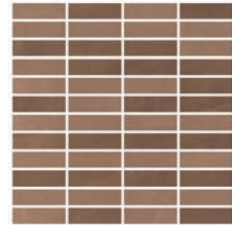
Star Black

*Other sizes available upon request

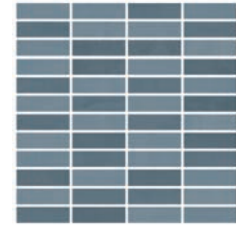
All Sizes are Nominal.

Colors shown may vary from actual product. Final selection should be made from actual product samples. Products and availability are subject to change, please refer to our website for the most up to date selection.

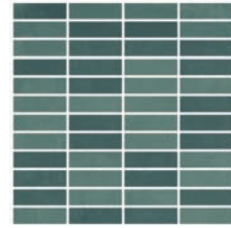
2"X2" MOSAIC



Pale Red | Lava Red






Ocean Blue | River Blue



Forest Green | Jade Green



1"x3" Mosaic in Pale Red and Lava Red
 3"x12" Field Tile in Pale Red
 12"x24" Field Tile in Pale Red

Features	Test Method	Value
Thickness	C499	Range: 0.04 in
Warpage (edge)	C485	Warpage ± 0.4% or ± 0.05 in
Warpage (diagonal)		Warpage ± 0.4% or ± 0.07 in
Wedging	C502	± 0.25% or ±0.03
Water Absorption	C373	≤ 0.5%
Breaking Strength	C648	250 lbf or Greater
Resistance to Thermal Shock	C484	Resistant
Resistance to Freeze / Thaw Cycling	C1026	
Chemical Resistance	C650	
Resistance to Stain	C1378	
DCOF Average Dynamic Coefficient of Friction	BOT 3000 Test	≥ 0.42
  <p>This product will contribute to USGBC registered LEED projects. It will also contribute to the ANSI approved NAHB Green Building Standard ICC 700. Low Emissions Material • Zero VOC</p> 		

According to ANSI and MIA standards, depending on the type and size of tile, it is recommended to have at least a 1/8" wide grout joint for floor tiles in order to be able to fill the grout joint full and never less than 1/16" wide. Please refer to TCNA guidelines for more on grout recommendations.

Product Info:

- Color Body Porcelain Tile
- Matte Finish
- 9mm Thickness
- Rectified Edge
- V2 - Slight Shading Variation
- Frost Resistance = Yes



www.genrose.com



www.genrose.com