

BOSQUE

 **GENROSE**





7"x60" Field Tile in Pocono Sage



7"x60" Field Tile in Everest White

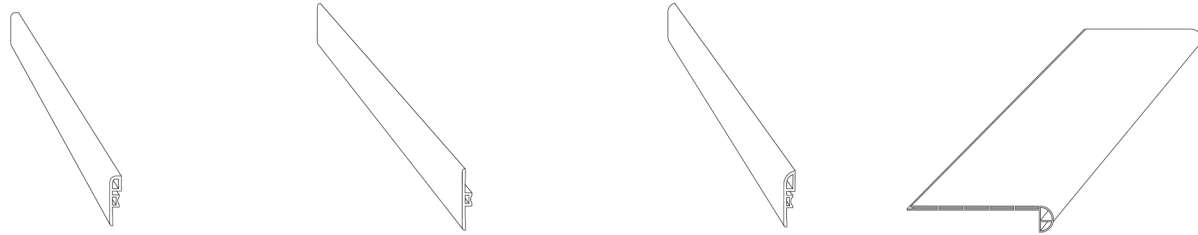
AVAILABLE IN:

5.5mm/20mil SPC Field Tiles

7"x60" *Matte Finish*

5.5mm/20mil SPC Trim Pieces

- 94" End Cap Matte
- 94" T-Mold Matte
- 94" Reducer Matte
- 94" StairNose Matte



- All sizes are NOMINAL



7"x60" Field Tile in Kilimanjaro Brown



Everest White



Sierra Brown



Pocono Sage



Kilimanjaro Brown



Rocky Grey

Colors shown may vary from actual product. Final selection should be made from actual product samples.

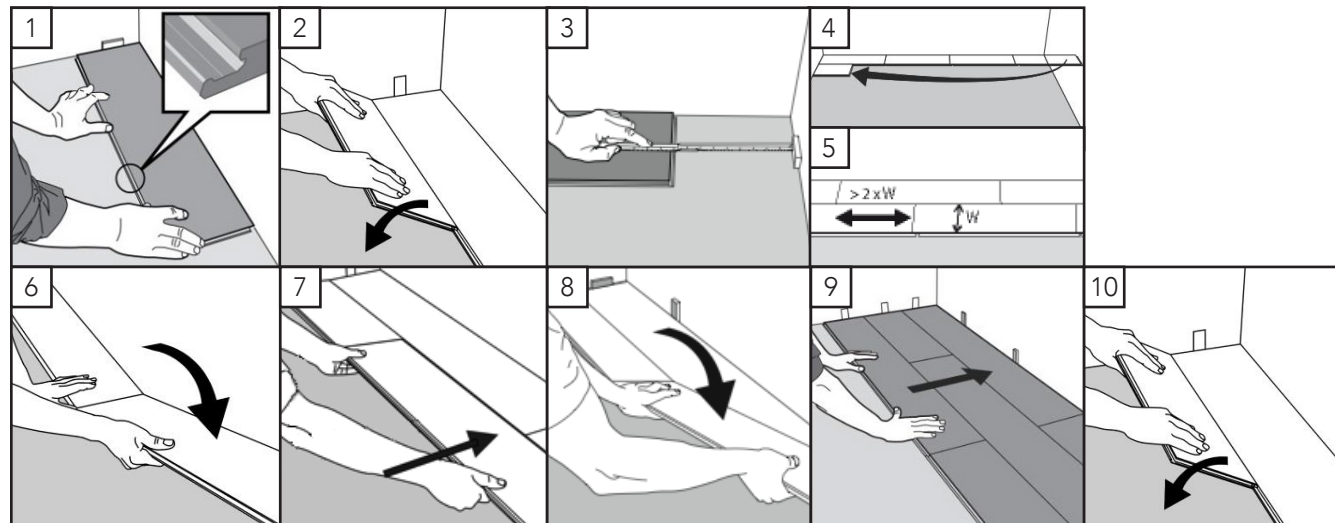
SPC Rigid flooring standard installation

Preparing the flooring: For best results, installation must be performed on a stable, flat, dry and dust-free clean surface. Subfloor flatness tolerance is ¼ in over 10 ft and should not slope more than 1 in per 6 ft in any direction.

Acclimation: We recommend installation in rooms with temperature between 50 °F & 100 °F (10 °C & 38 °C, The HVAC system must be on and functional before, during and after installation.

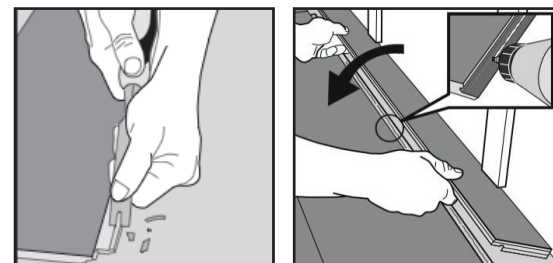
Installation guidelines: Product is intended for interior installations only and in temperature controlled homes or rooms. Do not install over carpet, foam, or in sunrooms/solarium, seasonal porches, camping trailers, boats.

1. First plank place a distance 8mm thickness to the left and position the plank against the wall. Later after 3 rows, you can easily position the flooring against the front wall in space 8mm. Prior to installation, measure the width of the room to check if the first row should preferably be cut length wise to get more equal width of the first and last rows planks.
2. Second plank, first row press the short end of the next floorboard at an angle to the first one, and then lay down. Complete the first row in the same way.
3. At the end of the first row, put a distance 8 mm to the wall and measure the length of the last plank to fit. Cut the last panel to correct length, recommended min length is two times the width of the plank.
4. Second row. Position the remaining part of the first row's last plank as first plank of second row. Keep again two times the width as min length. Put a distance against the wall.
5. General distances between short ends. Minimum distance between short ends of plank in parallel rows shall not be less than about two times the width of the plank.
6. Place the floorboard an angle against the floorboard in the previous row, press forward and fold down at the same time. Leave the panel in a somewhat up angled position where the panels start to lock. To make this further easier, a wedge with the suitable angle can be placed under the plank near the short side joint as support.
7. Second plank second row. Place the short end of the floorboard at an angle against the previous installed floorboard and fold down all the way.
8. Push to slide the plank against the row in front so it aligns with the first plank. Put it down like with the first plank when the floorboards are positioned tightly together. The first/previous plank can now be folded completely down to horizontal position and if a wedge is used it can be moved to the next short end joint.
9. After 2-3 rows, adjust the distance to the front wall by placing distances 8 mm. Keep the distances in position during the entire time of installation and remove once the installation is completed.
10. If the wall is uneven, the floorboards must be adapted to its contours. Mark the floorboards with the contour of the wall. Do not forget to leave a 8 mm space to the wall. This procedure shall be used also for the first row if necessary.



Horizontal installation

Cut off the locking element with a chisel, apply applicable glue on the adjusted strip and push the planks horizontally together. If necessary place some spacers between last board and the wall during the hardening time of the glue. The method can also be applied to the short ends.



Features	Test Method	Our Value		
Static Coefficient of Friction	ASTM C1028-07e1	Dry: 0.89 Wet: 0.68		
Specular Gloss at 60°C	ASTM D523-14	Average: 3.9		
Tensile Strength	ASTM D638-14	Average: 8.86 MPa		
Static Coefficient of Friction (Standard Leather)	ASTM D2047-11	Dry: 0.37 Wet: 0.84		
Abrasion Resistance	ASTM D4060-14	Load: 1000 g Revolutions: 1000 Mass Loss: 40.4 mg		
Density	ASTM D6111-13a	Average: 1.595 g/cm ³ Stone Powder: 71%		
Thickness Swell	ASTM D7519-11	Average: 0.73%		
Critical Radiant Flux	ASTM E648-15e1	0.98		
Specific Optical Density of Smoke Generated by Solid Materials	ASTM E662-15a	Irradiance Exposure	Flaming Mode	Non-Flaming Mode
		2.50 ± 0.05 w/cm ²	Pass	Pass
Indentation	ASTM F142-93 (2000)	Median 0.11 mm		
Thickness	ASTM F386-11	A tolerance of ± 0.13 mm		
Resistance to Chemicals	ASTM F925-13	No more than a slight change in surface dulling, surface attack or staining		
Heavy Metal Elements	ASTM F963-11	Not exceeding the limits		
Static Load Limit	ASTM F970-15	Applied Load: 250 lb Residual Indentation: 0.18 mm		
Impact Resistance	ASTM F1265-03a (2013)	After 4 drops from drop height of 508 mm, no breakage or crack of the sample		
Resistance to Heat	ASTM F1514-03	ΔE* shall not be greater than 8.0 after 7 days of exposure to 70°C		
Resistance to Light	ASTM F1515-15	ΔE* shall not be greater than 8.0 after a 300H exposure		
Residual Indentation	ASTM F1914-07	Average ≤ 8% Max ≤ 10%		
Size	ASTM F2055-10	A tolerance of ± 0.4 mm/ 305 mm		
		≤ 0.25 mm/ 305 mm		
Squareness	ASTM F2199-09	≤ 0.51 mm/ 305 mm		
Dimension Stability	ASTM F2199-09	≤ 0.51 mm/ 305 mm		
Fungi Resistance	ASTM G21-15	Rating 0		
Slip Resistance	DIN 51130	Meets or Exceeds the industry recommendations for flat surfaces		
Micro-Organism Resistance	EN 14372	Phthalate Free Pass		

Environmental Data

- Micro organism resistant: Phthalate free pass EN14372/ bacteriostat, no growth
- Indoor air quality - Compliant
- Low emitting material: EN71-3 - Compliant
- Plants certifications - ISO 9002, ISO 14001, OHSAS 18001
- Health and Safety - Complies with CE regulation
- Limited Warranty: Residential = Lifetime | Commercial = 10 years

Product Info:

- SPC Luxury Vinyl Tile
- Matte Finishes
- 5.5mm Thickness





www.genrose.com