

CAPTIVA



F.M
offee





3" x 12" Wall Tile in Azzuro

AVAILABLE STOCK ITEMS:

8mm Ceramic Wall Tiles			
SIZE	FINISH	COLORS	
3"x 12"	Glossy	White Bianco Sporco Smeraldo Azzuro Grigio Chiaro	
8mm Porcelain Mosaics			
SHEET SIZE	TYPE	FINISH	COLORS
11"x13"	1"x 3" Herringbone	Glossy	White Bianco Sporco Smeraldo Azzuro Grigio Chiaro
12"x 12"	1"x 3" Brick	Glossy	White
Ceramic Trim Pieces			
SIZE	TYPE	FINISH	COLORS
8"	Pencil	Glossy	White Bianco Sporco Smeraldo Azzuro Grigio Chiaro

All Sizes are Nominal.



White



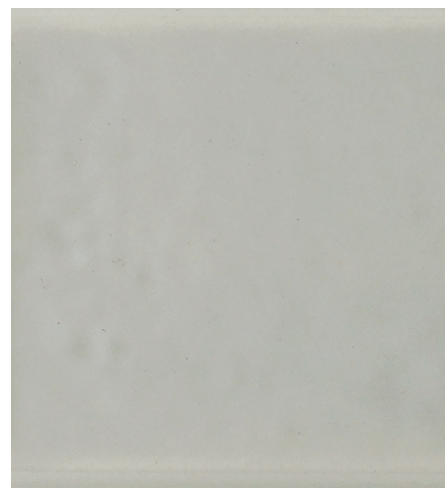
Bianco Sporco



Smeraldo



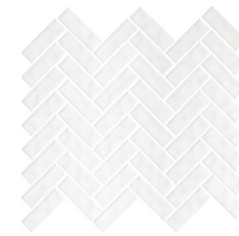
Azzuro



Grigio Chiaro

Colors shown may vary from actual product. Final selection should be made from actual product samples. Products and availability are subject to change, please refer to our website for the most up to date selection.

1"x3" HERRINGBONE MOSAIC



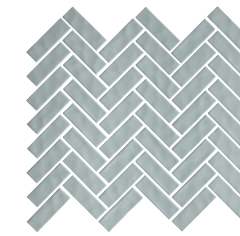
White



Bianco Sporco



Smeraldo

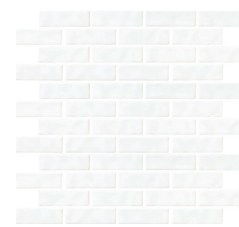


Azzuro



Grigio Chiaro

1"x3" BRICK MOSAIC



White



Features	Test Method	Value
Length and Width	ASTM C499	± 0.9 mm
Surface Quality	EN ISO 10545 - 2	A minimum of 95% of tiles examined are without visible defects.
Warpage (Diagonal)	ASTM C485	± 0.8 mm
Warpage (Edge)		± 0.8 mm
Wedging	ASTM C502	± 0.8 mm
Water Absorption	ASTM C373	>10% ; < 17%
Crazing Resistance	ASTM C424	Resistant
Low Emissions Material • Zero VOC		

According to ANSI and MIA standards, depending on the type and size of tile, it is recommended to have at least a 1/8" wide grout joint for floor tiles in order to be able to fill the grout joint full and never less than 1/16" wide. Please refer to TCNA guidelines for more on grout recommendations.

Product Info:

- Ceramic Wall Tile
- Glossy Finish
- 8mm Thickness
- Pressed Edge
- V2 - Slight Shading Variation
- Frost Resistance = No

Contact your sales representative for more information. All material must be inspected prior to installation. Absolutely no claims will be accepted after installation.

Features	Test Method	Value
Length and Width	ASTM C499	± 5%
Thickness	ASTM C499	± 0.76 mm
Surface Quality	EN ISO 10545 - 2 ANSI 5.4.3.2	A minimum of 95% of tiles examined are without visible defects.
Warpage (Diagonal)	ASTM C485	± 0.75%
Warpage (Edge)		± 1%
Wedging	ASTM C502	± 2%
Breaking Strength	ASTM C648	< 500 lbf
Abrasion Resistance	ASTM C1027	Class 4
Thermal Shock Resistance	ASTM C484	Resistant
Crazing Resistance	ASTM C424	Resistant
Chemical Resistance	ASTM C650	Resistant
Lead & Cadmium Extracted from Ceramics	ASTM C895	Below 200 PPM
Stain Resistance	ASTM C1378	Class 5
VOC	-	Low Emissions Material Zero VOC
Mounting / Crooked Tiles	Individual joint range <30% of the average joint width	
Mounting Wide & Narrow Joint	Average joint widths for each tile must be within ± 25% of average joint width of the sheet	

According to ANSI and MIA standards, depending on the type and size of tile, it is recommended to have at least a 1/8" wide grout joint for floor tiles in order to be able to fill the grout joint full and never less than 1/16" wide. Please refer to TCNA guidelines for more on grout recommendations.

Product Info:

- Glazed Porcelain Mosaics
- Glossy Finish
- 8mm Thickness
- Pressed Edge
- V2 - Slight Shading Variation
- Frost Resistance = Yes

Contact your sales representative for more information. All material must be inspected prior to installation. Absolutely no claims will be accepted after installation.





www.genrose.com