

CHARLESTON

 **GENROSE**





7"x48" Floor Tile in Classical Oak



7"x48" Floor Tile in Red Oak



7"x48" Floor Tile in Grey Oak



7"x48" Floor Tile in Hickory

AVAILABLE IN:

Floor Tile

7"x48"

- All sizes are NOMINAL



Coastal



Grey Oak



Pine Assembly



Golden Oak



Hickory



Classic Oak



Dark Oak



Red Oak

7"x48" Floor Tile in Golden Oak

Colors shown may vary from actual product. Final selection should be made from actual product samples.

QUICKCLICK PRODUCT INSTALLATION INSTRUCTIONS

SUITABLE SURFACES

Lightly textured or porous surfaces. Well-bonded, solid floors. Dry, clean, well-cured concrete (cured for at least 60 days prior). Wood floors with plywood on top. Ceramic or porcelain tiles with grout lines filled with floor leveler. All surfaces must be clean and dust free.

UNSUITABLE SURFACES

Rough, uneven surfaces including carpet and underlay. Rough, heavily textured and/or uneven surfaces may telegraph through the vinyl and distort the finished surface. Do not install this product in areas which are exposed to long term direct sunlight such as sun rooms or solariums.

WARNING: DO NOT REMOVE OLD RESILIENT FLOORING. THESE PRODUCTS MAY CONTAIN EITHER ASBESTOS FIBERS OR CRYSTALLINE SILICA, WHICH CAN BE HARMFUL TO YOUR HEALTH.

RADIANT HEATED FLOORS

Can be installed over hydronic radiant heated floors or electric radiant heated floors that use embedded cables under the subfloor. DO NOT INSTALL over any electric heating mat that is installed on top of the subfloor. Do not turn heat above 29°C (85°F). To avoid overheating, the use of an in-floor temperature sensor is recommended.

PREPARATION

The vinyl planks should be allowed to acclimatize to room temperature (approx 20°C/68°F). Carefully check planks for any defects before installation. Any plank that has been installed will be deemed acceptable to

the installer. Check that all ITEM NUMBERS are the same and that you have purchased sufficient material to complete the job. Remove any traces of glue or residue from the previous flooring.

New concrete floors need to dry out for at least 60 days prior to installation. Wood plank floors require a plywood subfloor. All nail heads must be driven down below the surface. Securely nail all loose boards. Scrape, plane or fill uneven boards, holes or cracks using floor-leveling compound if sub-floor is uneven – over 3.2 mm (1/8”) within a span of 1.2 m (4’). If installing over existing tile, use a floor levelling compound to skim coat grout lines. Make sure the floor is smooth, clean, and free of wax, grease, oil or dust, and sealed as necessary before laying planks.

A 6-mil poly moisture barrier is required to be installed over concrete slabs to prevent moisture vapor emissions from coming up through joint and potentially damaging the floor and joint locking mechanism.

TOOLS AND SUPPLIES

Saw, tapping block, rubber mallet, spacers, pencil, tape measure, ruler, safety goggles

INSTALLING THE FIRST ROW

Start in a corner by placing the first plank with the tongue side facing the wall. Use spacers around the perimeter of the room, as well as against any fixed objects, to maintain a minimum 8 mm (5/16”) expansion space for rooms up to 12.2 m (40’) in either direction and a minimum 12 mm (1/2”) expansion space for rooms up to 30 m (100’) in either direction. The expansion space accounts for the normal movement of the floor. A T-Molding must be used for commercial spaces measuring greater than 30 m (100’) in either direction. If the flooring is installed in an areas falling outside the normal room temperature range, a T-Molding is required every 7.62 m (25’). **Diagram 1.**

NOTE: This spacing must also be maintained between the floor and all vertical surfaces, including cabinets, posts, partitions, door jams and door tracks. You will also need to use transition strips in doorways and between rooms. Failure to do so may cause buckling or gapping.

Insert the end tongue of the second plank into the end groove of the first tile at an angle of approx. 15–20 degrees. When lowered the plank will click into place. The planks should be flat to the floor. **Diagram 2.**

WARNING: Failure to properly line up the end joint and attempting to force it in while out of alignment could result in permanent damage to the end joint. Continue connecting the first row until you reach the last full tile. Fit the last tile by rotating the plank 180° with the pattern side upward,

place beside the row. Line a ruler up across the end of the last full plank and across this new plank. Draw a line across the new plank with a pencil and cut with a saw. Attach as described above. **Diagram 3.**

It is important to ensure that the planks in the first row are straight before beginning installation of the second row. Use a rubber mallet and tapping block.

INSTALLING THE SECOND ROW

Begin the second row with the offcut piece from the first row to stagger the pattern. Pieces should be a minimum of 150 mm (6”) long. Remember to use spacers along each wall to maintain an expansion space of 8–12 mm (3/8”–1/2”) between the wall and the flooring. **Diagram 4.**

NOTE: It is faster to assemble planks into a new row at the ends and then attach the entire row to the previous row on the long sides. To start your second row, lay your first plank on the subfloor. Take your second plank, and insert the end tongue into the end groove of the first plank at an angle of approximately 15–20 degrees. When lowered, the plank will click into place with light pressure. The planks should be flat to the floor. Make sure gaps are as small as possible. Continue assembling the planks this way until you have your second row complete.

To attach the second row to the first row, tilt and push the side tongue into the side groove of the first row at an angle of approx. 15–20 degrees. When lowered, the planks will click into place and be flat to the floor. To ensure a strong seated joint, carefully use a rubber mallet and tapping block to lightly tap into place. Line up edges carefully. Continue laying remaining rows in this manner. **Diagram 5.**

INSTALLING THE LAST ROW

To fit the last row, start by using the offcut piece from the previous row. Lay the plank on top of the previous row. With the tongue to the wall, use a ruler to draw a cutline. Don’t forget to allow room for spacers. Cut the plank and attach into position. **Diagram 6.**

DOOR FRAMES AND HEATING VENTS

Door frames and heating vents also require expansion room. First cut the plank to the correct length. Then place the cut plank next to its actual position and use a ruler to measure the areas to be cut out and mark them. Cut out the marked points allowing the necessary expansion distance on each side. **Diagram 7.**

You can trim door frames by turning a plank upside down and using a handsaw to cut away the necessary height so that the plank slides easily under the frames. **Diagram 8.**

Remove the spacers once the floor is completely installed.

CARE AND MAINTENANCE

Avoid exposure to direct sunlight for prolonged periods of time. Use drapes or blinds to minimize direct sunlight during peak sunlight hours.

Do not expose this floor to temperatures below -58°F or above 150°F (below -50°C or above 65.5°C).

Water leakage over or around the outer edges of the flooring may damage a wood subfloor, so clean up water as soon as possible. Sweep regularly to remove surface grit and dust. Use a damp cloth or mop to clean up any dirt and footprints.

CAUTION: Planks are slippery when wet.

Never use wax, polish, abrasive cleaners or scouring agents as they may dull or distort the finish.

High heels can damage floors.

Do not allow pets with unclipped nails to scratch or damage the floor.

Use felt pads under heavy furniture, chairs and tables. A protective hard floor chair mat should be used on any area where furniture with wheels (such as an office chair) will be used.

Use doormats at entrance ways to protect the floor.

If other trades are in the work area, a floor protector is highly recommended to help protect the finish of the floor.

It’s a good idea to save a few planks in case of accidental damage. Planks can be replaced or repaired by a flooring professional.

WARRANTY

This guarantee is for replacement or refund of the vinyl plank flooring only, not labor (including the cost of labor for installation of the replacement floor) or costs incurred with loss of time, incidental expenses or any other damage. It does not cover damage from improper installation or maintenance (including side or end gapping), burns, tears, indentations, stains or reduction in gloss level due to normal use and/or exterior applications. Gapping, shrinkage, squeaks, Warranty does not cover damage due to caster action or rolling loads.

Lifetime Residential Warranty

This quality vinyl plank is guaranteed not to wear through or stain for the duration of your life in your home. From the date of purchase, your floor will be free from manufacturing defects and will not wear through or permanently stain from common household stains when installed and maintained according to instructions supplied with each carton.

*Lifetime means 40 years.

20 Year Commercial Warranty

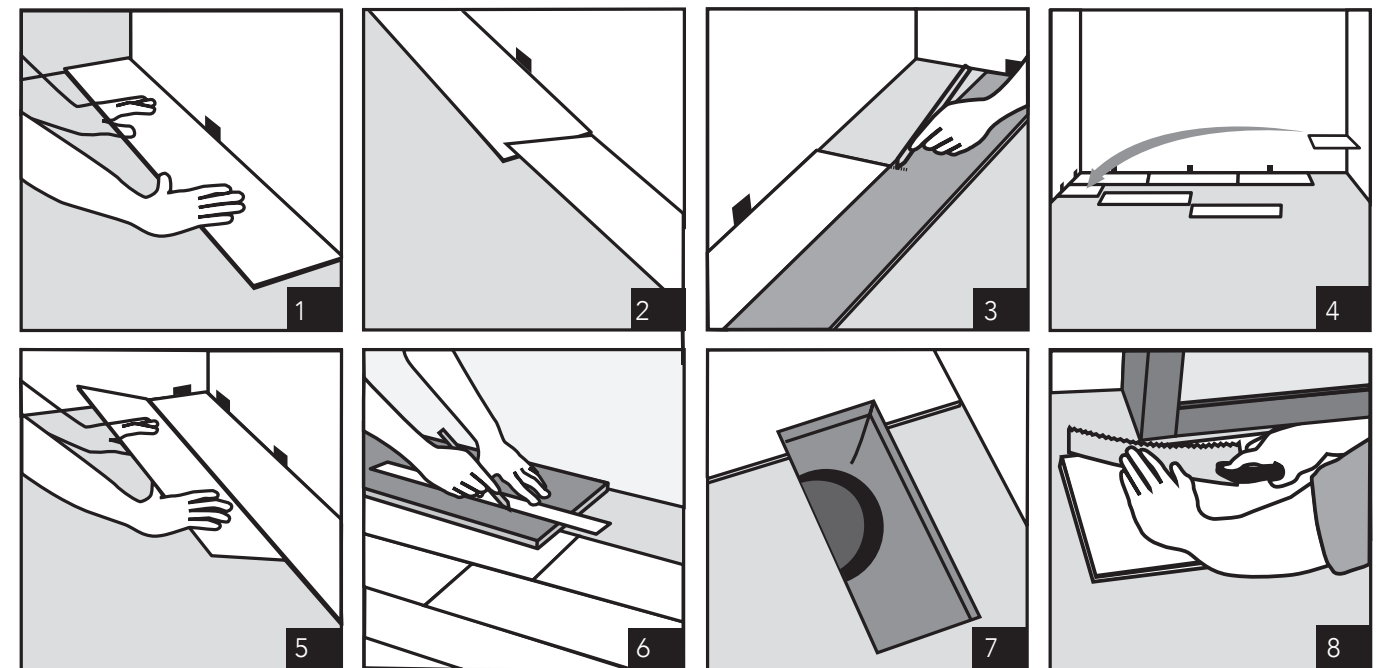
Our 20 Year Limited Commercial Warranty for vinyl plank means that for 20 years, from the date of purchase, your floor will be free from manufacturing defects and will not wear through when installed and maintained according to instructions supplied with each carton.

Improper installation or workmanship should be directed to the contractor who installed the floor.

Claims

This guarantee applies only to the original purchaser and proof of purchase is required for all claims. Claims for wear must show a minimum dime size area. This guarantee is pro-rated based on the amount of time the floor has been installed. If you wish to file a claim under warranty, contact the authorized dealer where the flooring was purchased.

QUICKCLICK PRODUCT INSTALLATION INSTRUCTIONS DIAGRAMS





7"x48" Floor Tile in Pine Assembly

Features	Test Method	Our Value
Size		7" W x 48" H
Thickness		0.2" (5 mm)
Wear Layer		20 mil (0.5 mm)
Dimensional Stability and Curling after Exposure to Low Temperatures	EN ISO 23999:2012	Change of -0.02% in manufacturing direction and -0.03% across manufacturing direction when exposed to -22°F (-30°C)
IIC	ASTM E492-09	IIC 72
This product is phthalate free		

Product Info:

- Quick Click Vinyl Plank Flooring
- 5 mm Thickness
- 20 mil (0.5 mm) Wear Layer
- Lifetime Guarantee (40 years): For Residential
- 20 Year Guarantee: For Light Commercial Uses





www.genrose.com