

IBIZA

 **GENROSE**





2.5"x8" Wall Tile in Chalk



5"x5" Wall Tile in Chalk



2.5"x8" Wall Tile in Sand



5"x5" Wall Tile in Sand



2.5"x8" Wall Tile in Coral



5"x5" Wall Tile in Coral



2.5"x8" Wall Tile in Chalk | Sapphire



2.5"x8" Wall Tile in Arctic

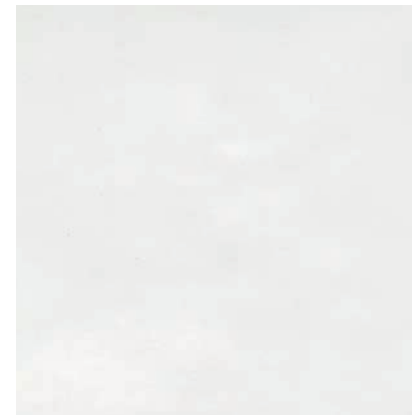


5"x5" Wall Tile in Carbon

AVAILABLE IN:

8mm Wall Tiles			
SIZE	EDGE	FINISH	COLORS
2.5"x8"	Pressed	Glossy	Arctic Chalk Sand Coral Jade Sapphire Carbon
5"x5"	Pressed	Glossy	Arctic Chalk Sand Coral Jade Sapphire Carbon
Trim			
SIZE	TYPE	FINISH	COLORS
12"	Jolly	Glossy	Arctic Chalk Sand Coral Jade Sapphire Carbon

- All sizes are NOMINAL



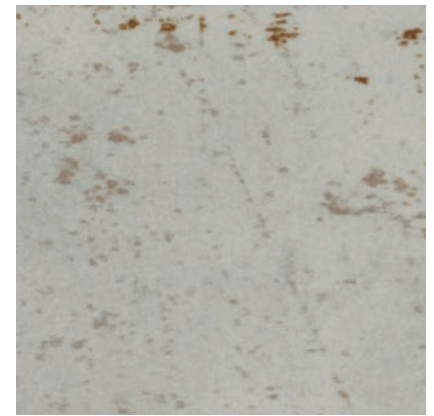
Arctic

V1 



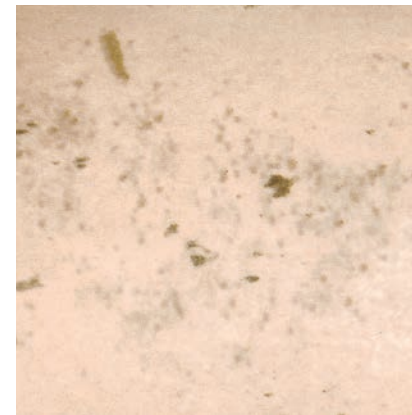
Chalk

V3 



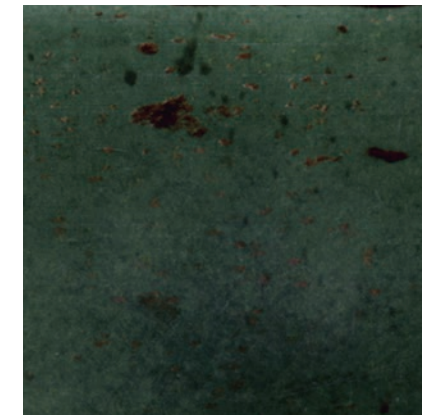
Sand

V1 



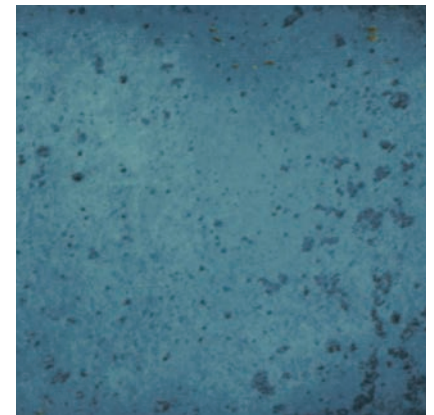
Coral

V3 



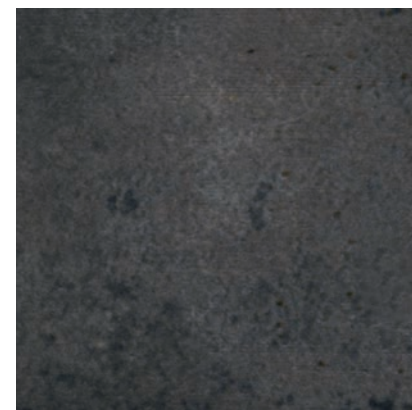
Jade

V3 



Sapphire

V3 



Carbon

V3 

5"x5" Wall Tile in Sapphire

Colors shown may vary from actual product. Final selection should be made from actual product samples.



Features	Test Method	Value
Orthogonality	ISO 10545-2	± 0.5%
Thickness		± 5%
Central and Side Bend		± 0.3%
Roll		± 0.5%
Length and Width		± 0.5%
Water Absorption		ISO 10545-3
Flexure Resistance	ISO 10545-4	12 N/mm ²
Breaking Resistance		≥ 600 N
Thermal Shock Resistance	ISO 10545-9	No Defects
Crazing Resistance	ISO 10545-11	No Defects
Frost Resistance	ISO 10545-12	Not Resistant
Chemical Resistance to Cleaning Products	ISO 10545-13	Min. GB
Stain Resistance	ISO 10545-14	Min. Class 3

According to ANSI and MIA standards, depending on the type and size of tile, it is recommended to have at least a 1/8" wide grout joint for floor tiles in order to be able to fill the grout joint full and never less than 1/16" wide. Please refer to TCNA guidelines for more on grout recommendations.

Product Info:

- Ceramic Tile
- Glossy Finish
- 8mm Thickness
- Pressed Edge
- V1 - Uniform Variation (Arctic, Sand) | V3 - Moderate Variation (Chalk, Jade, Sapphire, Carbon)
- Frost Resistance = No





www.genrose.com