

**SAN MARINO**

 **GENROSE**





Herringbone Mosaic in Sapphire



Herringbone Mosaic in Sapphire



Chevron Mosaic in Fawn



Chevron Mosaic in Fawn



Herringbone Mosaic in Cloud



Herringbone Mosaic in Cloud  
Basketweave Mosaic in Frost and Black  
Bubble Mosaic in Mix 2

# AVAILABLE IN:

## Ceramic Tile

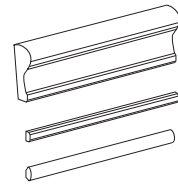
- 2.25"x8.5" *Gloss Finish*
- 4"x8" *Gloss Finish*
- 4"x8" *Corduroy Wall Deco Gloss Finish*
- 4.5"x4.5" *Gloss Finish*
- 2.25"x4.5" *Gloss Finish*

## Enamel Glass Mosaics

- 11.8"x11.8" Sheet *Hexagon Mosaic Matte Finish*
- 11"x11.7" Sheet *Herringbone Mosaic Gloss Finish*
- 11.5"x11.5" Sheet *Chevron Mosaic Matte Finish*
- 11.25"x11.25" Sheet *Basketweave Mosaic Matte Finish w/ Gloss Dot*
- 11.5"x11.5" Sheet *Cube Mosaic Matte Finish*
- 11.3"x11.3" Sheet *Bubble Mosaic Matte Finish*

## Ceramic Trim Pieces

- 2"x8.5" *Molding Gloss Finish*
- .75"x8.5" *Pencil Gloss Finish*
- .625"x8.5" *Quartino Gloss Finish*



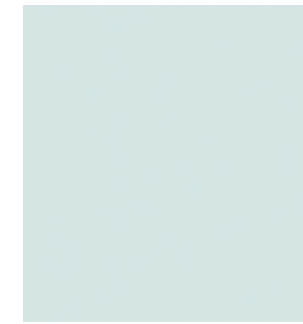
- All sizes are NOMINAL



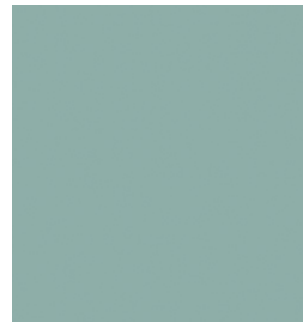
**Sapphire**



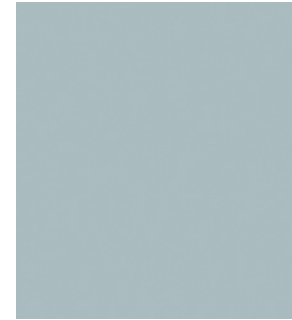
**Slate**



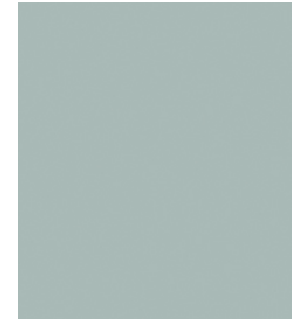
**Seafoam**



**Smeralda**



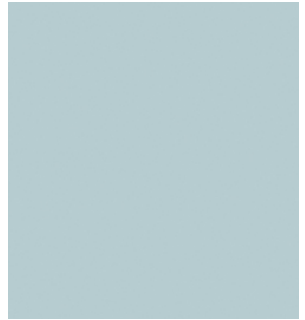
**Colonial Blue**



**Blue Grass**



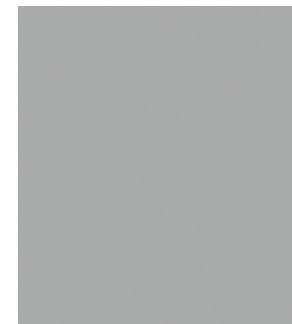
**Sage**



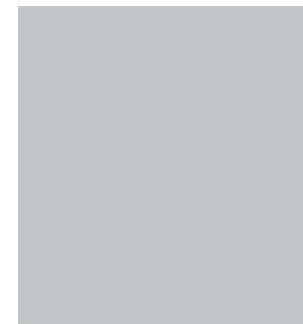
**Sky**



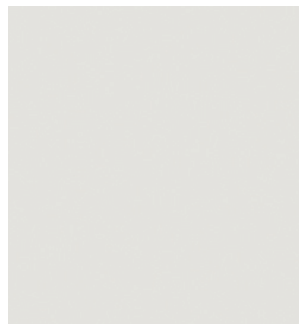
**Black**  
*Hexagon Mosaic Only*



**Smoke**



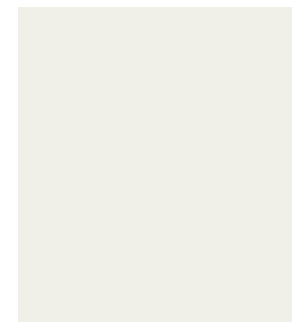
**Cloud**



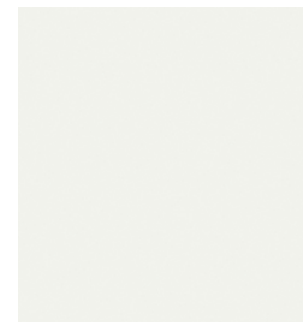
**Dove**



**Fawn**



**Pearl**



**Frost**



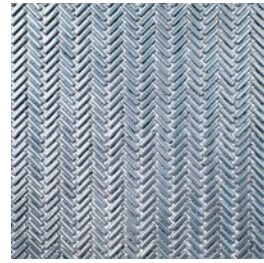
**Snow**  
*Ceramic Tile Only*

Colors shown may vary from actual product. Final selection should be made from actual product samples.

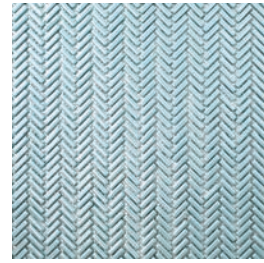
## HERRINGBONE MOSAIC



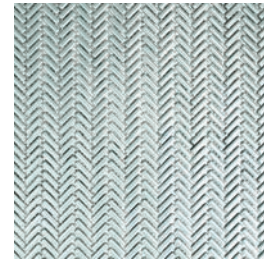
Sapphire



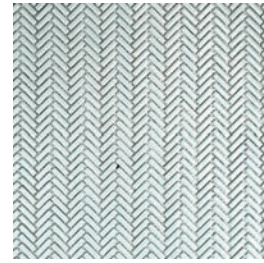
Slate



Sky



Blue Grass



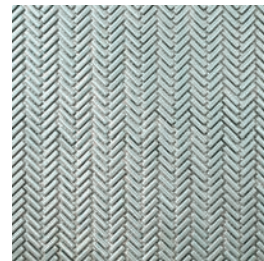
Seafoam



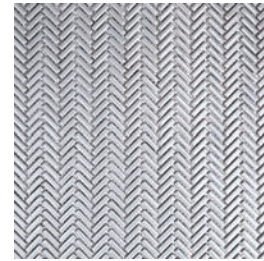
Smeralda



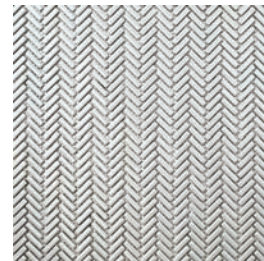
Cloud



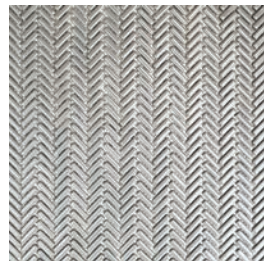
Sage



Dove



Colonial Blue



Smoke



Fawn

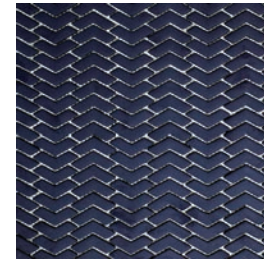


Frost

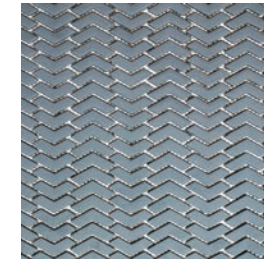


Pearl

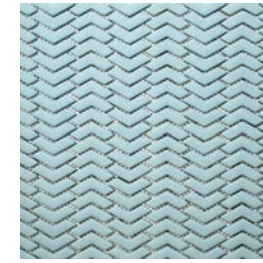
## CHEVRON MOSAIC



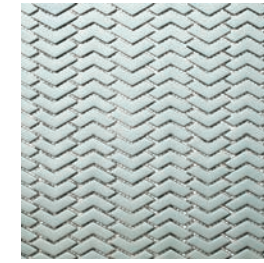
Sapphire



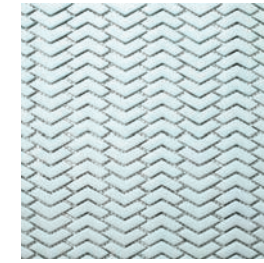
Slate



Sky



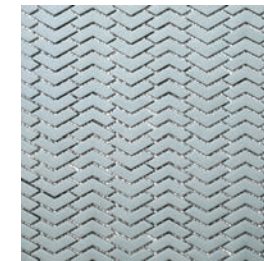
Blue Grass



Seafoam



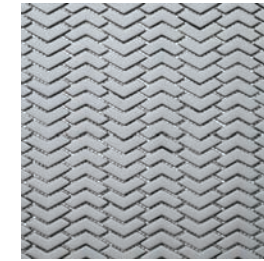
Smeralda



Cloud



Sage



Dove



Colonial Blue



Smoke



Fawn



Frost

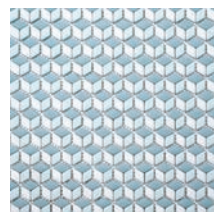


Pearl

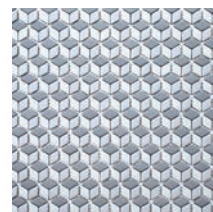
## CUBE MOSAIC



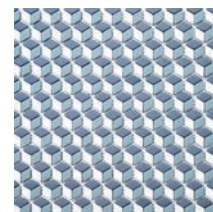
Cube #1  
Pearl, Frost,  
and Fawn



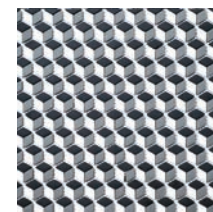
Cube #2  
Smeralda, Frost,  
and Seafoam



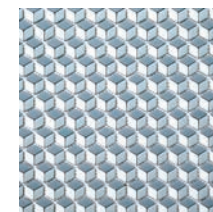
Cube #3  
Dove, Smoke,  
and Cloud



Cube #4  
Slate, Frost,  
and Blue Grass



Cube #5  
Black, Frost,  
and Charcoal

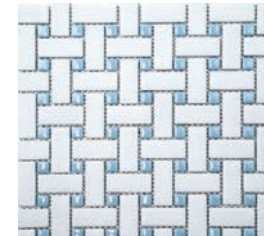


Cube #6  
Sage, Frost,  
and Colonial Blue

## BASKETWEAVE MOSAIC



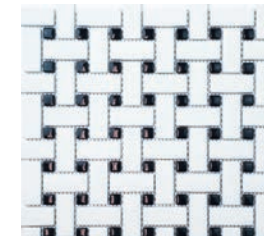
Pearl and Fawn



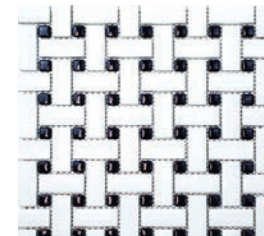
Frost and Sky



Frost and Cloud

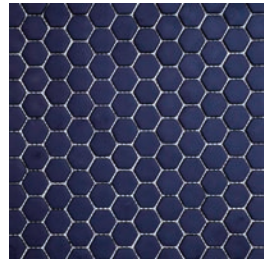


Frost and Black

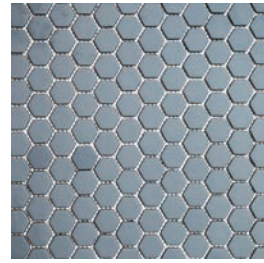


Frost and Sapphire

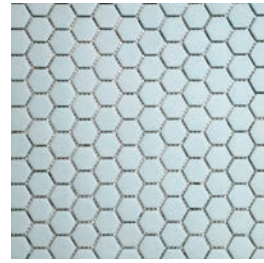
## HEXAGON MOSAIC



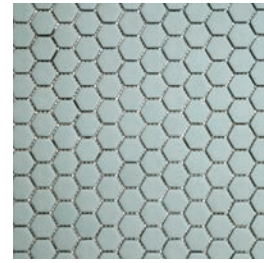
Sapphire



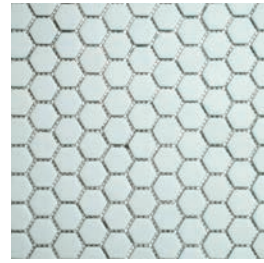
Slate



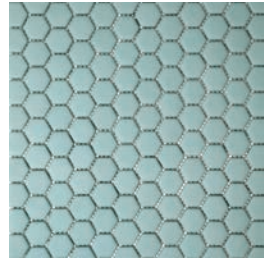
Sky



Blue Grass



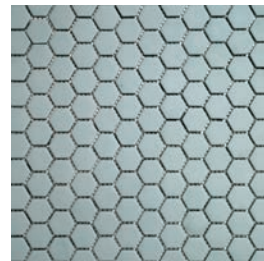
Seafoam



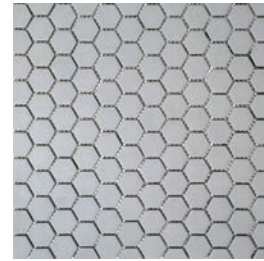
Smeralda



Cloud



Sage



Dove



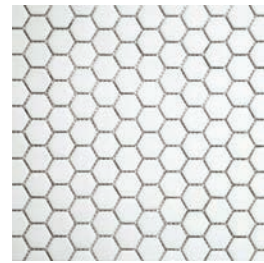
Colonial Blue



Smoke



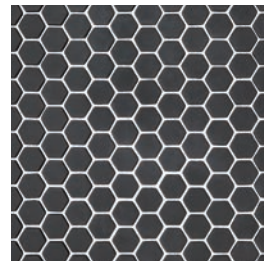
Fawn



Frost

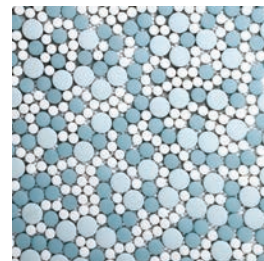


Pearl

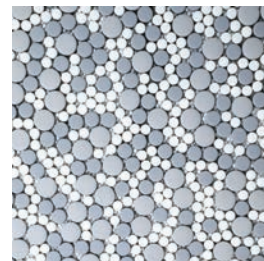


Black

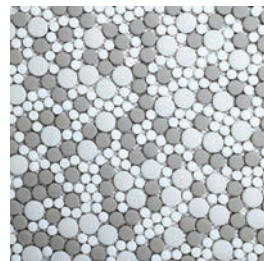
## BUBBLE MOSAIC



Mix #1  
Smeralda, Frost,  
and Seafoam



Mix #2  
Dove, Frost,  
and Cloud

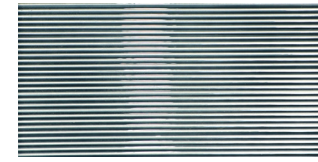


Mix #3  
Pearl, Frost,  
and Fawn

## CORDUROY DECO



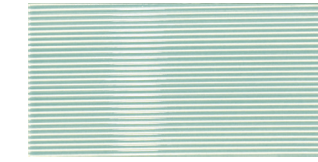
Sapphire



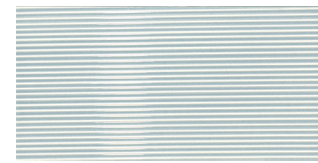
Slate



Seafoam



Smeralda



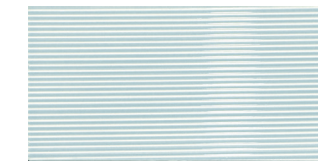
Colonial Blue



Blue Grass



Sage



Sky



Smoke



Cloud



Dove



Fawn



Pearl



Frost



Snow



4.5" x 8" Corduroy Deco in Dove | Blue Grass | Slate

Features	Norms	Fixed Value
<b>Break Strength</b>	ASTM C648-04 - ANSI A 137.1	521 lbf
<b>Chemical Resistance Class</b>	ANSI A137.1/A137.2	Class A

According to ANSI and MIA standards, depending on the type and size of tile, it is recommended to have at least a 1/8" wide grout joint for floor tiles in order to be able to fill the grout joint full and never less than 1/16" wide. Please refer to TCNA guidelines for more on grout recommendations.

Features	Norms	Fixed Value
<b>Facial Defects</b>	ANSI A 137.2 7.1	Complied
<b>Structural Defects</b>	ANSI A 137.2 7.1	Complied
<b>Thickness</b>	ASTM C499	.43mm
<b>Nominal Size</b>	ASTM C499	-2.54%~-0.04%
<b>Caliber Range</b>	ASTM C499	-1.10%~+1.14%
<b>Static Coefficient of Friction</b>	ASTM C1028	Dry: 0.83 Wet: 0.61
<b>Dynamic Coefficient of Friction</b>	Refer to ASTM C1028	Dry: 0.60 Wet: 0.55
<b>Water Absorption</b>	ASTM C373	0.03%~0.05%
<b>Chemical Resistance</b>	ASTM C650	Not affected
<b>Chemical Resistance Class</b>	ANSI A 137.2 5.2.3.5	Class A
<b>Stain Resistance</b>	ASTM C1378	Not affected
<b>Stain Resistance Class</b>	ANSI A 137.2 5.2.3.6	Class A
<b>Linear Thermal Expansion</b>	ASTM C372	N/A
<b>Moisture Expansion</b>	ASTM C370	N/A
<b>Thermal Shock Resistance</b>	ANSI A 137.2 7.9	Resistant
<b>Frost Resistance</b>	ASTM C1026	Resistant

According to ANSI and MIA standards, depending on the type and size of tile, it is recommended to have at least a 1/8" wide grout joint for floor tiles in order to be able to fill the grout joint full and never less than 1/16" wide. Please refer to TCNA guidelines for more on grout recommendations.

**Product Info:**

- Ceramic Tile
- Gloss Finish
- 9.5mm Thickness
- PEI = 5 - Heavy Commercial (Snow in Gloss Finish Only)  
Wall and Light Duty Floors (Light Colors in Gloss Finish)  
(Dark Colors will show scuffs if placed on floor)
- Frost Resistance = No



**Product Info:**

- Enamel Glass Mosaic
- Matte | Gloss Finishes
- 9.5mm Thickness
- Frost Resistance = Yes



[www.genrose.com](http://www.genrose.com)





[www.genrose.com](http://www.genrose.com)