

SHOCHU



For more product information, scan the QR code





4.5" x 9" Wall Deco in Midnight



4.5" x 9" Wall Deco in Chalky



4.5" x 9" Wall Deco in Chalky  
4.5" x 9" Wall Deco in Wear



4.5" x 9" Wall Deco in Chalky  
4.5" x 9" Wall Deco in Rusty Red

# AVAILABLE STOCKED ITEMS:

8.5mm Wall Deco		
SIZE	FINISH	COLORS
4.5" x 9"	Glossy	Polar White   Chalky   Rusty Red   Wear   Midnight   Charcoal Grey

This product is made up of 8 different faces that are randomly mixed in the box. All sizes are nominal.



**Polar White**



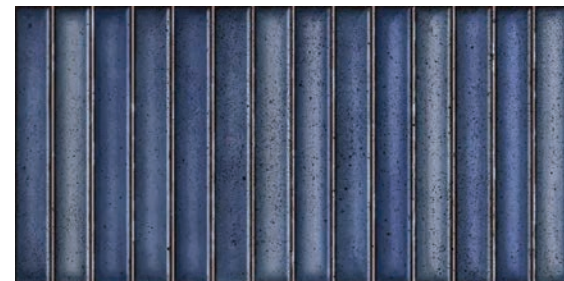
**Chalky**



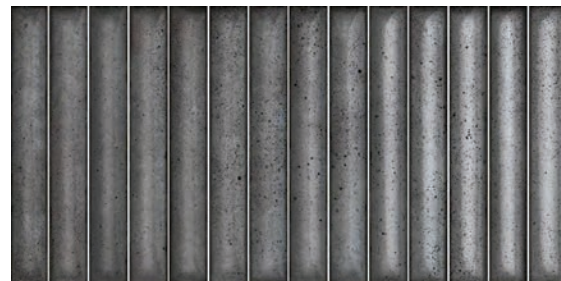
**Rusty Red**



**Wear**



**Midnight**



**Charcoal Grey**



**Grout Between Tile**



**Grout Between Finger Grooves**

**V3** - Moderate variation is inherent in this tile. All material must be inspected prior to installation. Absolutely no claims will be accepted after installation.

Colors shown may vary from actual product. Final selection should be made from actual product samples. Products and availability are subject to change, please refer to our website for the most up to date selection.

Features	Test Method	Value
<b>Thickness</b>	UNE EN ISO 10545-2	± 0.5mm
<b>Orthogonality</b>		± 0.75mm
<b>Surface Flatness</b>		± 0.75mm
<b>Surface Quality</b>		≥ 95%
<b>Water Absorption</b>	UNE EN ISO 10545-3	0.5% < E ≤ 3%
<b>Breaking Strength</b>	UNE EN ISO 10545-4	>700 N
<b>Flexure Resistance</b>	UNE EN ISO 10545-4:9	>30 N/MM <sup>2</sup>
<b>Abrasion Resistance</b>	UNE EN ISO 10545-7	N/A
<b>Crazing Resistance</b>	UNE EN ISO 10545-11	Resistant
<b>Frost Resistance</b>	UNE EN ISO 10545-12	Resistant
<b>Mohs Hardness</b>	UNE EN 67-101	N/A
<b>Stain Resistance</b>	UNE EN ISO 10545-14	4
<b>Recycled Material</b>	-	11.4%

According to ANSI and MIA standards, depending on the type and size of tile, it is recommended to have at least a 1/8" wide grout joint for floor tiles in order to be able to fill the grout joint full and never less than 1/16" wide. Please refer to TCNA guidelines for more on grout recommendations.

Shochu is designed with a narrow "grout effect" between the dimensional fingers on the face of the tile. The wall tiles can be grouted between each tile or between each tile and across the faces of the finger tiles.

**EXPERT TIP:** When adding grout to the face of each tile, the depth of grout between the finger grooves will change the effect produced. A shallow fill will reveal more of the contours of the grooves on the tile and will produce a thinner grout line. It is recommended that the size of the grout joint created within the finger grooves matches the size of the grout joint around the perimeter of the tiles. In addition, the grout between each finger groove must be cleaned uniformly throughout the installation in order to maintain a consistent look.



**Product Info:**

- Porcelain Tile
- Glossy Finish
- 8.5mm Thickness
- Rectified Edge
- Frost Resistance = Yes
- V3 - Moderate Variation



[www.genrose.com](http://www.genrose.com)

Contact your sales representative for more information. All material must be inspected prior to installation. Absolutely no claims will be accepted after installation.



[www.genrose.com](http://www.genrose.com)