

TWILIGHT





12"x12" Wall Tile in Black 3

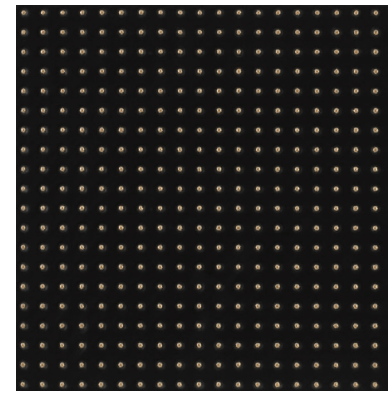


12"x12" Wall Tile in Black 1 | 2 | 3

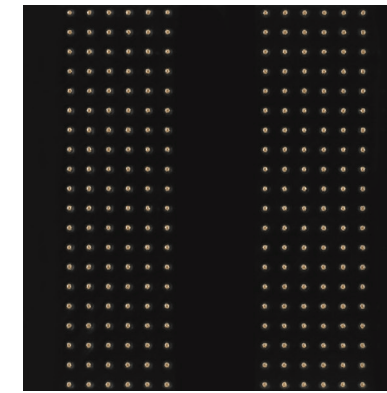
AVAILABLE SPECIAL ORDER ITEMS:

9.3mm Wall Tiles			
SIZE	EDGE	FINISH	COLORS
12"x12"	Rectified	Satin	Black 1 Black 2 Black 3 White 1 White 2 White 3

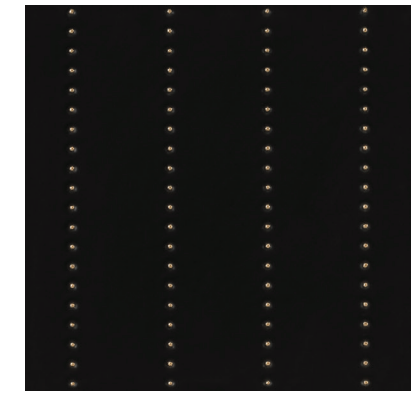
All Sizes are Nominal.



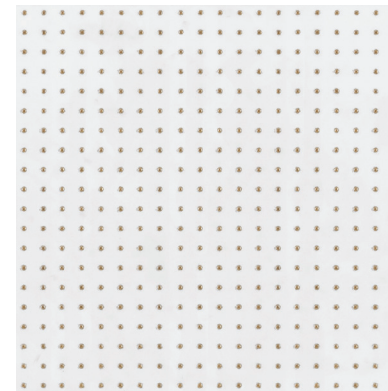
Black 1



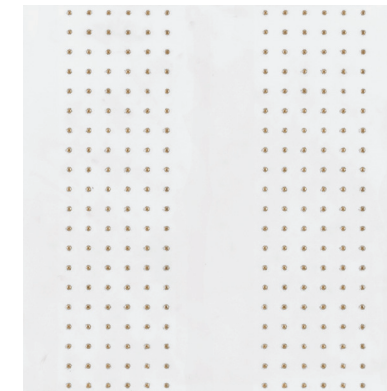
Black 2



Black 3



White 1



White 2



White 3



12"x12" Wall Tile in White 1

Colors shown may vary from actual product. Final selection should be made from actual product samples. Products and availability are subject to change, please refer to our website for the most up to date selection.



Features	Test Method	Value
Water Absorption	ASTM C373-16	≤ 20
Scratch Hardness	C1895-20	4
Breaking Strength	ASTM C648-04	≥ 125 lbs
Chemical Resistance	ASTM C650-04	Class E
Frost Resistance	ASTM C1026-13	No
Stain Resistance	ASTM C1378-04	Class A
Recycled Material	-	14%
VOC Emissions	-	Zero VOCs

According to ANSI and MIA standards, depending on the type and size of tile, it is recommended to have at least a 1/8" wide grout joint for floor tiles in order to be able to fill the grout joint full and never less than 1/16" wide. Please refer to TCNA guidelines for more on grout recommendations.

Specialty Product Disclaimer:

This is a finely decorative Specialty Product series with metallic or distinctive glazing finishes. These tiles are subject to surface damage when exposed to physical or chemical forces. **Not suitable for use in wet areas.**

Special Cleaning Instructions:

These tiles have a special decorative finish with precious metals or distinctive glazing, and therefore should be cleaned only with a cloth soaked in water and neutral detergent. Do not use acidic or abrasive cleaning products or sponges that may damage the tile surface.



Product Info:

- Ceramic Tile
- Satin Finish
- 9.3mm Thickness
- Rectified Edge
- V1 - Uniform Appearance
- Frost Resistance = No





www.genrose.com